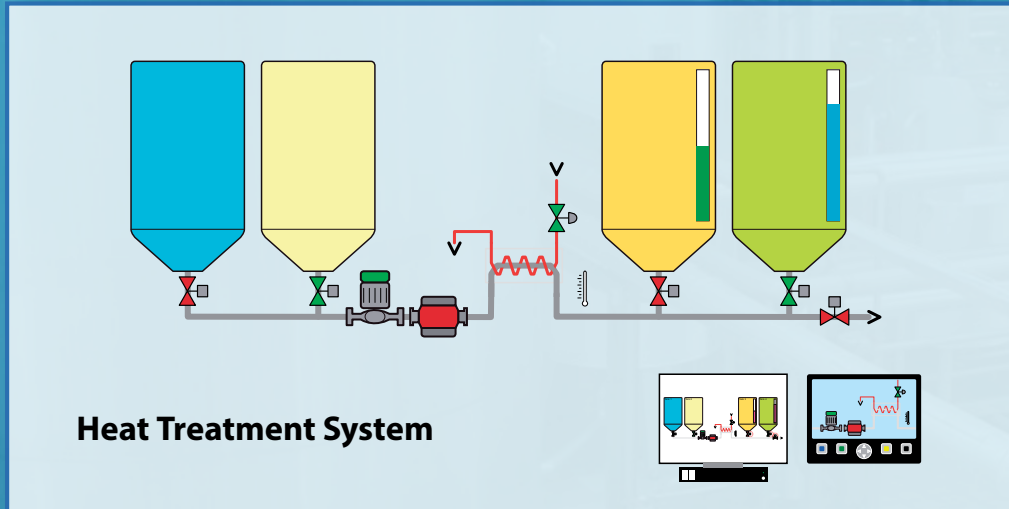
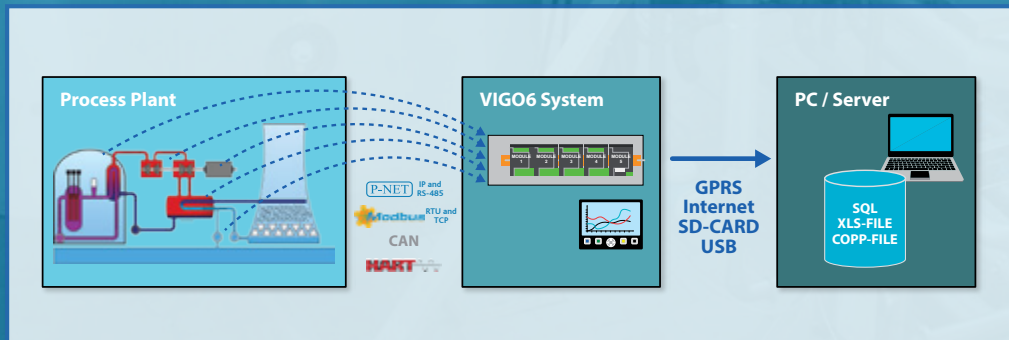


### Project examples

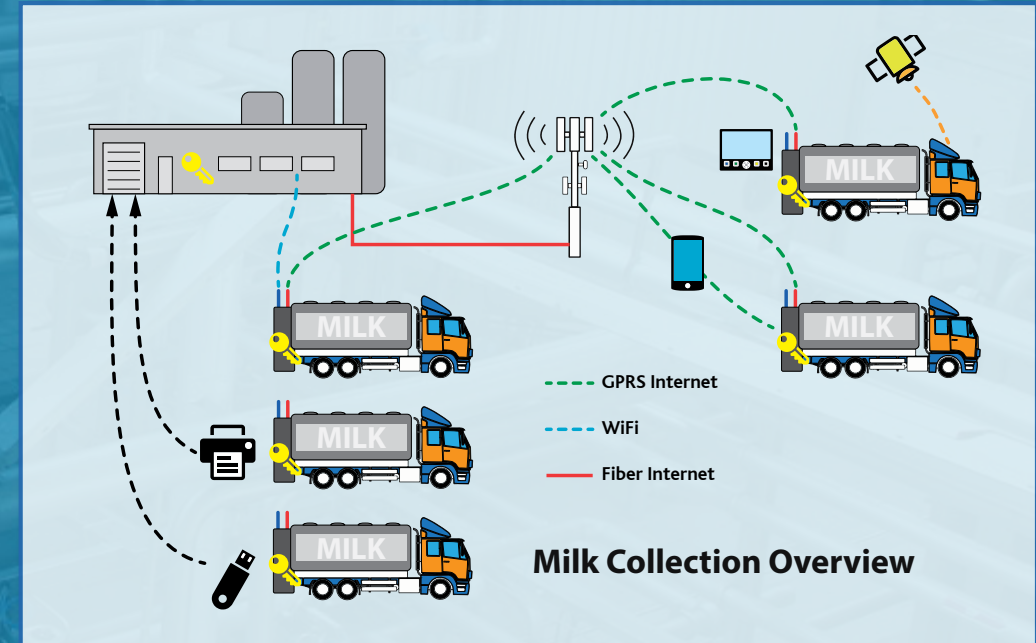
#### Plant Process Control



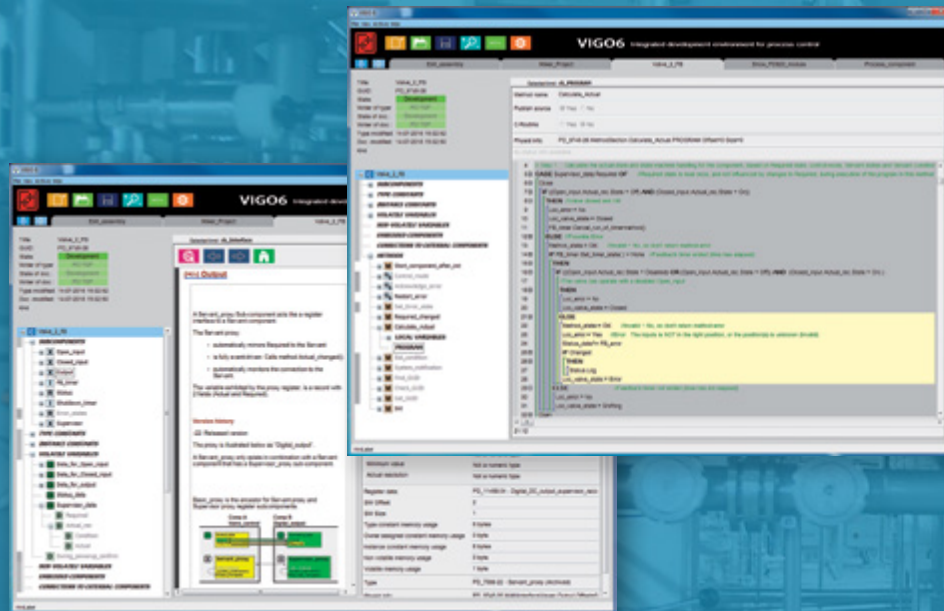
#### Data Acquisition



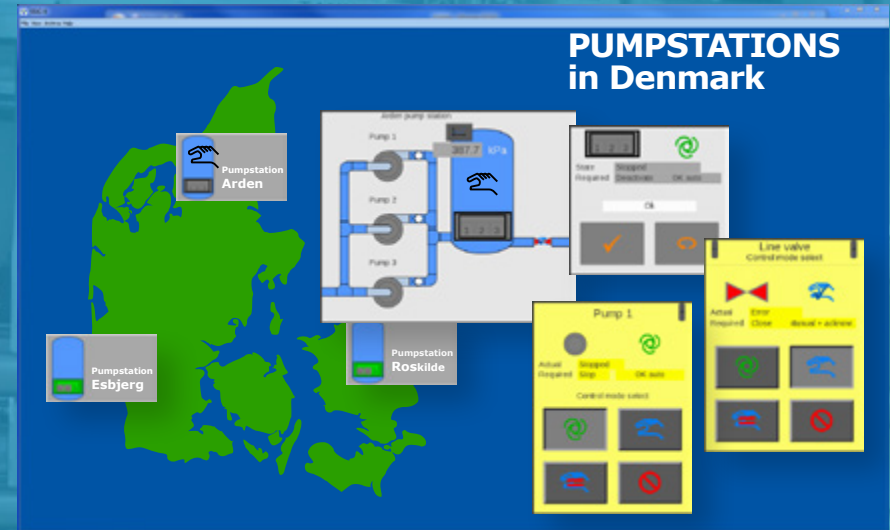
#### Collection Trucks



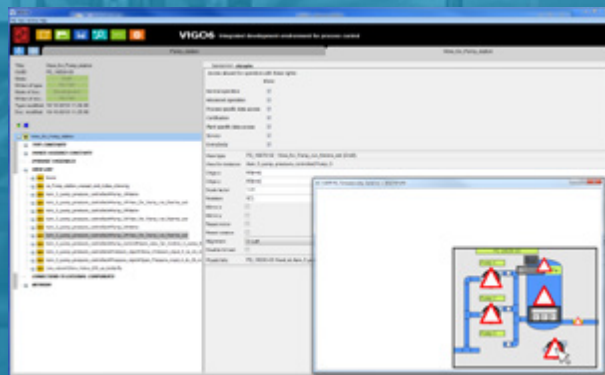
## Control code editor



## Tested and proven Component Library - including visualisation



## Visualisation editor



## WELMEC 7.2 approved software development platform



# Hardware Suite

User Programmable Modules designed and produced in Denmark

## M100 Series

• Electronic Module

• Power Bar

• I/O terminals

• Base Module

• P-NET Light-Link

Minimum wiring through Power Bar and P-NET on Light-Link. Easy replacement of Electronic Module the Base Module contains all wiring and I/O terminals.

## M36 Series

• Electronic Module

• Power Bar

• Base Module

• I/O terminals

• P-NET Light-Link

### PD440 FLOW TRANSMITTER



P-NET on RS-485 and Ethernet  
MODBUS RTU, MODBUS TCP  
IO-Link  
NFC for configuration  
Analogue I/O, Digital I/O  
Flow and Volume  
Conductivity and Temperature

### PD610 COPP GATEWAY



P-NET on RS-485, Light-Link and Ethernet  
MODBUS RTU, MODBUS TCP  
CAN Bus

### PD644 ANALOGUE INPUT



P-NET on Light-Link  
HART  
Analogue Input

### PD688 DISPLAY



P-NET on RS-485, Light-Link and Ethernet  
MODBUS RTU, MODBUS TCP  
USB (Print or USB Storage)  
NFC for configuration  
SD- Memory Card  
Digital I/O

### PD802 COPP DPI



P-NET on RS-485, Light-Link and Ethernet  
MODBUS RTU, MODBUS TCP  
SD-Memory Card  
USB (Print or USB Storage)

### PD803 COPP DPI GSM GPS



P-NET on RS-485, Light-Link and Ethernet  
MODBUS RTU, MODBUS TCP  
SD-Memory Card  
USB (Print or USB Storage)  
GPRS  
GPS

### PD820 15 CH. DIGITAL I/O



P-NET on Light-Link  
Digital I/O  
Relay Output

### PD821 15 CH. DIGITAL INPUT



P-NET on Light-Link  
Digital Input

### PD840 15 CH. ANALOGUE INPUT



P-NET on Light-Link  
Analogue Input

### PD850 MULTIFUNCTION



P-NET on Light-Link  
HART  
Digital I/O  
Analogue I/O  
Relay Output

### PD870 MOTOR CONTROLLER



P-NET on Light-Link  
High Power Output  
Digital Output  
Analogue Input

### PD940 DIPSTICK



P-NET on RS-485  
Analogue Out  
Digital I/O  
Level  
Conductivity  
Temperature

### PD947 GPS



P-NET on RS-485 and Ethernet  
GPS

# OIML



# PROCES-DATA

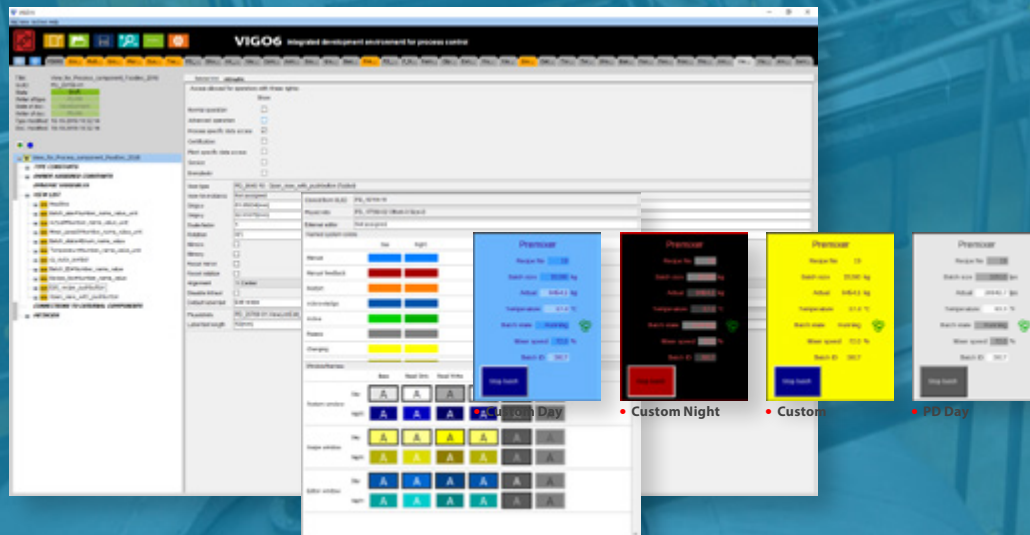
## User role differentiation



## Translate



## Design Colour Theme



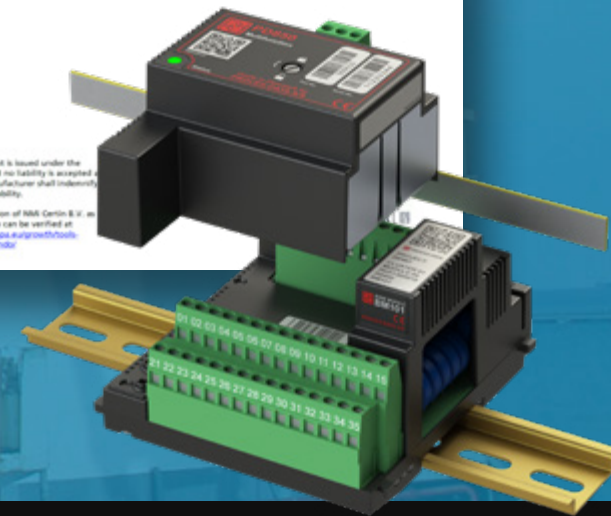
## Handle Metric/US Units and printout





## Features:

- Measurement of flow in liquids
- Indication of legal measured volume
- Interface to different types of flow transmitters/measurement transducers
- Running date and time
- Status indication
- Parameter settings and protection of Weights & Measures parameters against unintended change
- Visualization of the legal relevant configuration data
- Storage on SD-card of alibi reports that provide irrefutable evidence of performed measurements

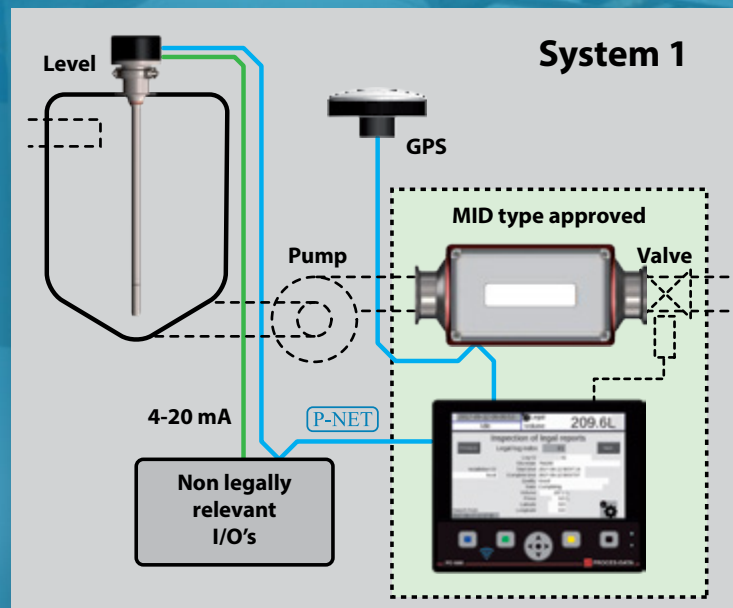


# MID Certified

Approved for three different configurations:

## System 1:

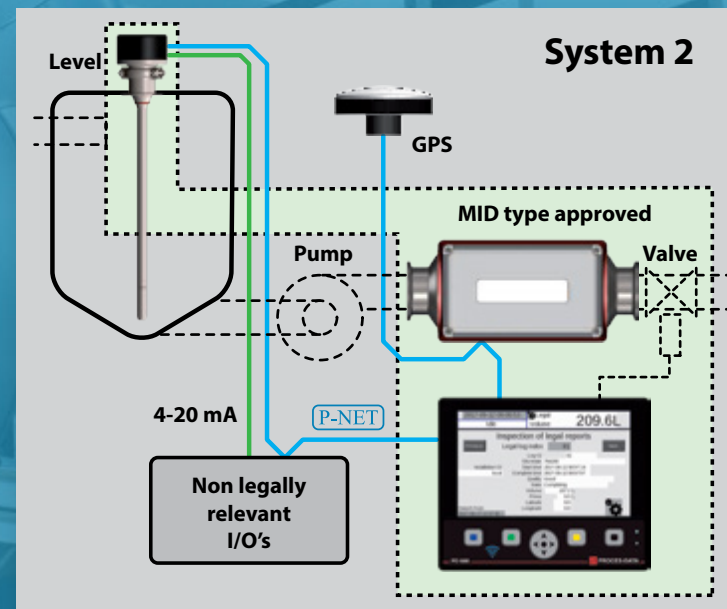
- PD688 Display
- PD340 Flow Transmitter



## System 2

### System 2:

- PD688 Display
- PD340 Flow Transmitter
- PD940 Dipstick



## System 3:

- PD688 Display
- PD340 Flow Transmitter with 2-Phase Output

